

Ashtons



4 Highcliffe Court Clifton YO30 6BP

£1,300

2



1



1

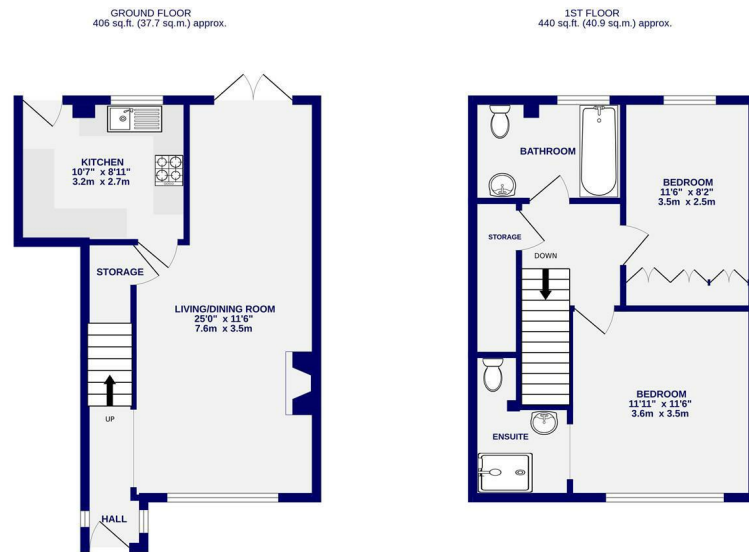


C



A well presented two bedroom townhouse just off Clifton Green, within walking distance to the city centre and easy access to the outer ring road. The property is offered to let fully furnished with accommodation briefly comprising of entrance hallway; spacious living dining room with patio doors to the rear courtyard; kitchen equipped with electric oven, hob, washer, integrated fridge & dishwasher. To the first floor are two double bedrooms, one with ensuite shower room, a house bathroom and sizeable storage cupboard. The property has the added benefit of single garage for storage or parking.

Available Now / 12 Month Tenancy / Deposit £1400 / Council Tax Band C / EPC Rating C



TOTAL FLOOR AREA: 846 sq.ft. (78.6 sq.m.) approx.
 Whilst every attempt has been made to ensure the accuracy of the foregoing measurements of rooms and any other items are approximate. It is included in the plan for the garage/porch will form part of the overall floor area and no responsibility is taken for any errors, omissions or mis-statements. This plan is for illustrative purposes only and should be used as such by any prospective purchaser. The services, systems and appliances shown have not been tested and no guarantee as to their operability.
 Made with Metreplex C2025



Ashtons Lettings

01904 731404

lettings@ashtonsnet.com